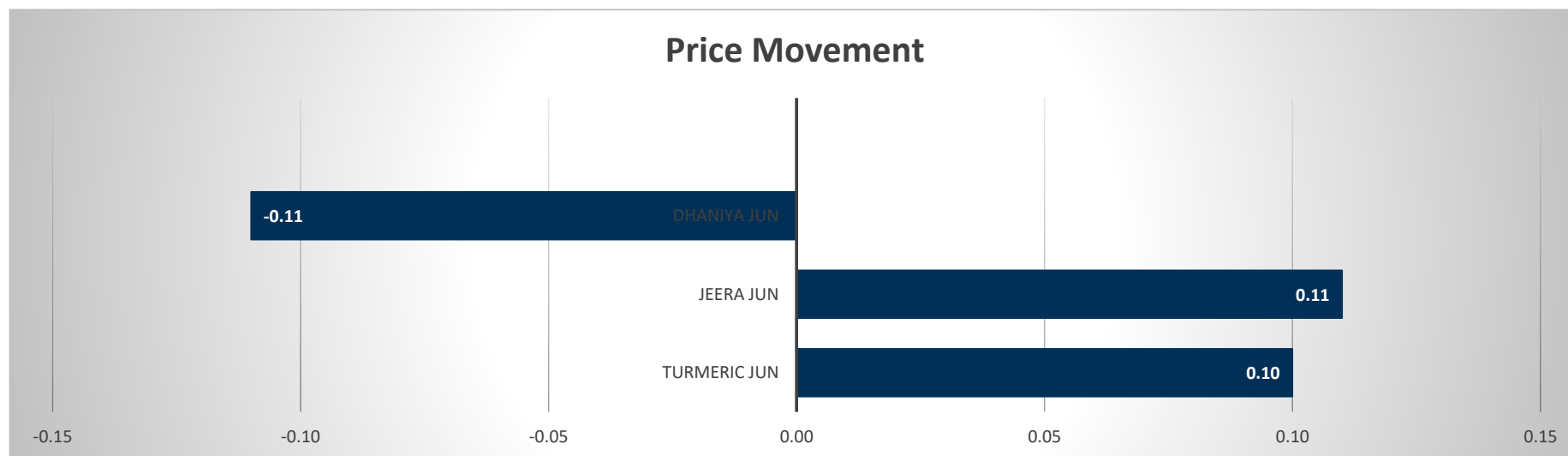


Commodity	Open	High	Low	Close	Rs.Chg	% Chg	Spot	Vol	OI	OI Chg	Fut-Spot	OI STATUS
Turmeric Jun	7952.00	8100.00	7882.00	8026.00	8.00	0.10	7622.75	2075	9880	-1.59	403.25	Short Covering
Jeera Jun	13745.00	13805.00	13720.00	13770.00	15.00	0.11	13980.00	375	6189	-2.04	-210.00	Short Covering
Dhaniya Jun	7100.00	7142.00	7050.00	7092.00	-8.00	-0.11	7200.00	575	7095	-1.87	-108.00	Long Liquidation

Commodity	Daily Levels								Trend	Performance			
	Close	Res - 3	Res - 2	Res - 1	Pivot	Sup - 1	Sup - 2	Sup - 3		1 Week	1 Month	3 Month	1 Year
Turmeric	8026.00	8340.0	8220.0	8122.0	8002.0	7904.0	7784.0	7686.0	Positive	-21.48	-28.04	-14.01	16.96
Jeera	13770.00	13895.0	13850.0	13810.0	13765.0	13725.0	13680.0	13640.0	Positive	7.81	7.88	10.62	12.52
Dhaniya	7092.00	7232.0	7187.0	7140.0	7095.0	7048.0	7003.0	6956.0	Negative	3.21	2.73	7.32	20.41

## Price Movement

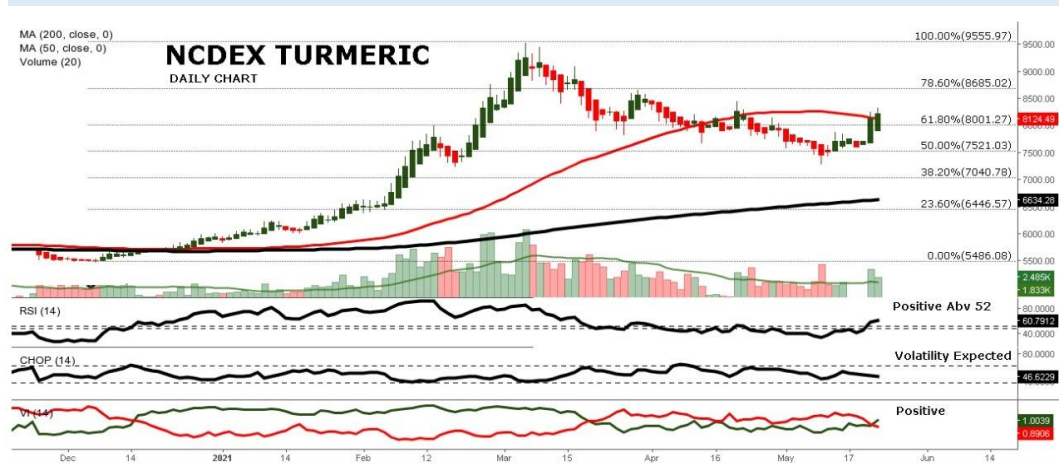


## DAILY TURMERIC SYNOPSIS

Expiry	Open	High	Low	Close	Rs.Chg	% Chg	Spot	Vol	OI	OI Chg	Fut-Spot	OI STATUS
18 JUN 2021	7952.00	8100.00	7882.00	8026.00	8.00	0.10	7622.75	2075	9880	-1.59	403.25	Short Covering
20 JUL 2021	8000.00	8206.00	8000.00	8150.00	-6.00	-0.07	7622.75	825	1775	29.56	527.25	Fresh Selling
20 AUG 2021	0.00	0.00	0.00	0.00	0.00	0.00	7622.75	0	0	0.00	-7622.75	Long Liquidation

- Turmeric trading range for the day is 7784-8220.
- Turmeric prices traded in range as the curbs and lockdowns announced to control the second wave of Covid-19 pandemic affected trading.
- However downside seen limited on following export demand from Europe, Gulf countries and Bangladesh.
- At least 50 per cent of the crop cultivated in the Maharashtra growing regions are estimated to have arrived at the terminal agricultural markets.
- In Nizamabad, a major spot market in AP, the price ended at 7622.75 Rupees dropped -61.35 Rupees.

## CHART



## TECHNICALS

### Simple Moving Average

5 Days	10 Days	20 Days	50 Days	100 Days	200 Days
8067	7861	7846	8153	7513	6659
BUY	BUY	BUY	BUY	BUY	BUY

### Exponential Moving Average

5 Days	10 Days	20 Days	50 Days	100 Days	200 Days
8082	7971	7937	7903	7544	6998
BUY	BUY	BUY	BUY	BUY	BUY

### Spread

Month	Rate	JUN	JUL	AUG
JUN	8026		124	-8026
JUL	8150			-8150
AUG	0			

## DAILY JEERA SYNOPSIS

Expiry	Open	High	Low	Close	Rs.Chg	% Chg	Spot	Vol	OI	OI Chg	Fut-Spot	OI STATUS
18 JUN 2021	13745.00	13805.00	13720.00	13770.00	15.00	0.11	13980.00	375	6189	-2.04	-210.00	Short Covering
20 JUL 2021	13905.00	13955.00	13850.00	13910.00	-5.00	-0.04	13980.00	279	936	15.56	-70.00	Fresh Selling
20 AUG 2021	0.00	0.00	0.00	0.00	0.00	0.00	13980.00	0	0	0.00	-13980.00	Long Liquidation

- Jeera trading range for the day is 13680-13850.
- Jeera traded in range as lockdown restrictions increased against rising Covid cases, slowing spot trade interest weakened market sentiments.
- As India struggles against curbing the Corona pandemic, exports markets have turned subdued.
- The importers prefer to wait for the situation to normalize before negotiating for fresh deals.
- In Unjha, a key spot market in Gujarat, jeera edged down by -20 Rupees to end at 13980 Rupees per 100 kg.

## CHART



## TECHNICALS

### Simple Moving Average

5 Days	10 Days	20 Days	50 Days	100 Days	200 Days
13952	13946	13937	14248	13739	13846
BUY	BUY	BUY	SELL	BUY	BUY

### Exponential Moving Average

5 Days	10 Days	20 Days	50 Days	100 Days	200 Days
13970	13966	14002	14031	13943	13965
SELL	SELL	SELL	SELL	BUY	SELL

### Spread

Month	Rate	JUN	JUL	AUG
JUN	13770		140	-13770
JUL	13910			-13910
AUG	0			

## DAILY DHANIYA SYNOPSIS

Expiry	Open	High	Low	Close	Rs.Chg	% Chg	Spot	Vol	OI	OI Chg	Fut-Spot	OI STATUS
18 JUN 2021	7100.00	7142.00	7050.00	7092.00	-8.00	-0.11	7200.00	575	7095	-1.87	-108.00	Long Liquidation
20 JUL 2021	7160.00	7206.00	7130.00	7160.00	-16.00	-0.22	7200.00	515	765	45.71	-40.00	Fresh Selling
20 AUG 2021	0.00	0.00	0.00	0.00	0.00	0.00	7200.00	0	0	0.00	-7200.00	Long Liquidation

- Dhaniya trading range for the day is 7003-7187.
- Dhaniya dropped as mandis across Rajasthan was affected due to the rapidly growing cases of corona virus.
- However, downside seen limited as sentiments are much better due to higher export demand and less stock in the pipeline
- According to FISS the production of coriander from the country this year will increase by 2.3% compared to last year.
- In Kota spot market in Rajasthan the prices gained 36.85 Rupees to end at 7200 Rupees per 100 kg.

## CHART



## TECHNICALS

### Simple Moving Average

5 Days	10 Days	20 Days	50 Days	100 Days	200 Days
7006	6902	6813	6999	6656	6601
BUY	BUY	BUY	BUY	BUY	BUY

### Exponential Moving Average

5 Days	10 Days	20 Days	50 Days	100 Days	200 Days
7005	6940	6907	6883	6764	6617
BUY	BUY	BUY	BUY	BUY	BUY

### Spread

Month	Rate	JUN	JUL	AUG
JUN	7092		68	-7092
JUL	7160			-7160
AUG	0			

## TURMERIC PRICE MOVEMENT SINCE 2011

Year	Harvesting					Sowing		Growth					Crop Calendar
	JAN	FEB	MAR	APR	MAY	JUN	JUL	AUG	SEP	OCT	NOV	DEC	
2011	9908.00	9868.00	9496.00	8830.00	7434.00	7736.00	7276.00	5780.00	4480.00	5010.00	4494.00	4766.00	-5478.00
	-3.28	-0.40	-3.77	-7.01	-15.81	4.06	-5.95	-20.56	-22.49	11.83	-10.30	6.05	-53.48
2012	4626.00	4836.00	4142.00	3508.00	3732.00	4110.00	5746.00	6080.00	5654.00	5128.00	4896.00	6798.00	2032.00
	-2.94	4.54	-14.35	-15.31	6.39	10.13	39.81	5.81	-7.01	-9.30	-4.52	38.85	42.64
2013	6342.00	6174.00	6394.00	6414.00	5860.00	5848.00	5100.00	5232.00	4632.00	4580.00	5062.00	6616.00	-182.00
	-6.71	-2.65	3.56	0.31	-8.64	-0.20	-12.79	2.59	-11.47	-1.12	10.52	30.70	-2.68
2014	7346.00	6904.00	6302.00	6754.00	6254.00	6574.00	6418.00	6616.00	6014.00	6212.00	6404.00	8990.00	2374.00
	11.03	-6.02	-8.72	7.17	-7.40	5.12	-2.37	3.09	-9.10	3.29	3.09	40.38	35.88
2015	8102.00	8544.00	7662.00	8486.00	7854.00	7048.00	7196.00	8732.00	7764.00	8984.00	9762.00	9780.00	790.00
	-9.88	5.46	-10.32	10.75	-7.45	-10.26	2.10	21.35	-11.09	15.71	8.66	0.18	8.79
2016	8200.00	8688.00	8110.00	8368.00	7964.00	8292.00	8154.00	7300.00	7186.00	7332.00	7254.00	6874.00	-2906.00
	-16.16	5.95	-6.65	3.18	-4.83	4.12	-1.66	-10.47	-1.56	2.03	-1.06	-5.24	-29.71
2017	6758.00	6876.00	6278.00	6058.00	5322.00	6378.00	7532.00	7322.00	7318.00	7070.00	7780.00	7842.00	968.00
	-1.69	1.75	-8.70	-3.50	-12.15	19.84	18.09	-2.79	-0.05	-3.39	10.04	0.80	14.08
2018	7314.00	6628.00	6694.00	7214.00	7192.00	7290.00	7312.00	6868.00	6770.00	6796.00	6502.00	6740.00	-1102.00
	-6.73	-9.38	1.00	7.77	-0.30	1.36	0.30	-6.07	-1.43	0.38	-4.33	3.66	-14.05
2019	6398.00	6238.00	6656.00	6438.00	7455.00	6320.00	6800.00	6780.00	6144.00	6160.00	5700.00	6562.00	-178.00
	-5.07	-2.50	6.70	-3.28	15.80	-15.22	7.59	-0.29	-9.38	0.26	-7.47	15.12	-2.64
2020	5956.00	6000.00	5802.00	5436.00	5284.00	5752.00	5764.00	6148.00	5776.00	5828.00	5536.00	5924.00	-638.00
	-9.23	0.74	-3.30	-6.31	-2.80	8.86	0.21	6.66	-6.05	0.90	-5.01	7.01	-9.72
2021	6554.00	8302.00	8490.00	7804.00									1880.00
	10.63	26.67	2.26	-8.08									31.74
Average	-3.64	2.20	-3.84	-1.30	-3.72	2.78	4.53	-0.07	-7.96	2.06	-0.04	13.75	Average

## JEERA PRICE MOVEMENT SINCE 2011

Year	Growth	Harvesting					Sowing					Growth	Crop Calendar
	JAN	FEB	MAR	APR	MAY	JUN	JUL	AUG	SEP	OCT	NOV	DEC	
2011	14706.00 2.65	17401.00 18.33	15710.00 -9.72	15197.00 -3.27	14094.00 -7.26	14627.00 3.78	16000.00 9.39	15636.00 -2.28	14676.00 -6.14	14379.00 -2.02	13452.00 -6.45	16024.00 19.12	1698.00 11.85
2012	14745.00 -7.98	14112.00 -4.29	11980.00 -15.11	12352.00 3.11	13015.00 5.37	13580.00 4.34	15350.00 13.03	14485.00 -5.64	13627.00 -5.92	14310.00 5.01	14208.00 -0.71	14672.00 3.27	-1352.00 -8.44
2013	13565.00 -7.54	12990.00 -4.24	13040.00 0.38	12887.00 -1.17	13182.00 2.29	13190.00 0.06	12980.00 -1.59	13672.50 5.34	12837.00 -6.11	12542.50 -2.29	12535.00 -0.06	12607.00 0.57	-2065.00 -14.07
2014	12130.00 -3.78	12520.00 3.22	10025.00 -19.93	10490.00 4.64	11135.00 6.15	11260.00 1.12	11180.00 -0.71	11290.00 0.98	10905.00 -3.41	11380.00 4.36	12315.00 8.22	15650.00 27.08	3043.00 24.14
2015	14720.00 -5.94	14790.00 0.48	14875.00 0.57	18045.00 21.31	17855.00 -1.05	16140.00 -9.61	15385.00 -4.68	16525.00 7.41	15895.00 -3.81	16200.00 1.92	16065.00 -0.83	14565.00 -9.34	-1085.00 -6.93
2016	13395.00 -8.03	13980.00 4.37	15565.00 11.34	17415.00 11.89	16345.00 -6.14	18040.00 10.37	19700.00 9.20	17755.00 -9.87	17295.00 -2.59	17410.00 0.66	18370.00 5.51	16855.00 -8.25	2290.00 15.72
2017	17900.00 6.20	16895.00 -5.61	17900.00 5.95	19490.00 8.88	17630.00 -9.54	18920.00 7.32	19340.00 2.22	19870.00 2.74	19280.00 -2.97	18560.00 -3.73	21780.00 17.35	21650.00 -0.60	4795.00 28.45
2018	16835.00 -22.24	15135.00 -10.10	15010.00 -0.83	15710.00 4.66	16195.00 3.09	18670.00 15.28	20390.00 9.21	19545.00 -4.14	18930.00 -3.15	20980.00 10.83	18640.00 -11.15	17685.00 -5.12	-3965.00 -18.31
2019	15965.00 -9.73	15440.00 -3.29	15735.00 1.91	16944.00 7.68	17540.00 3.52	17155.00 -2.19	17725.00 3.32	16920.00 -4.54	17165.00 1.45	16405.00 -4.43	16285.00 -0.73	16245.00 -0.25	-1440.00 -8.14
2020	14100.00 -13.20	13680.00 -2.98	14100.00 3.07	13645.00 -3.23	13560.00 -0.62	13645.00 0.63	14115.00 3.44	14240.00 0.89	13730.00 -3.58	14465.00 5.35	13805.00 -4.56	12665.00 -8.26	-3580.00 -22.04
2021	13435.00 6.08	13475.00 0.30	14710.00 9.17	13900.00 -5.51									1235.00 9.75
Average	-6.89	-0.59	-1.29	5.28	-1.02	3.47	5.09	-1.45	-3.26	1.03	1.60	1.66	Average

## DHANIYA PRICE MOVEMENT SINCE 2011

Year	Harvesting				Sowing				Growth	Crop Calendar			
	JAN	FEB	MAR	APR	MAY	JUN	JUL	AUG	SEP		OCT	NOV	DEC
2011	4586.00 10.12	5122.00 11.69	4825.00 -5.80	5184.00 7.44	4546.00 -12.31	4182.00 -8.01	6130.00 46.58	5825.00 -4.98	5272.00 -9.49	5120.00 -2.88	3985.00 -22.17	4129.00 3.61	-457.00 -9.97
2012	3937.00 -4.65	4517.00 14.73	4214.00 -6.71	3880.00 -7.93	3705.00 -4.51	3631.00 -2.00	4710.00 29.72	4071.00 -13.57	3924.00 -3.61	4434.00 13.00	5018.00 13.17	5489.00 9.39	1360.00 32.94
2013	6864.00 25.05	6566.00 -4.34	6743.00 2.70	6877.00 1.99	6745.00 -1.92	6537.00 -3.08	5232.00 -19.96	5728.00 9.48	5792.00 1.12	6806.00 17.51	7566.00 11.17	8063.00 6.57	2574.00 46.89
2014	8278.00 2.67	9440.00 14.04	9530.00 0.95	9373.00 -1.65	9504.00 1.40	11098.00 16.77	11825.00 6.55	11922.00 0.82	12146.00 1.88	12029.00 -0.96	12856.00 6.88	11611.00 -9.68	3548.00 44.00
2015	7845.00 -32.43	6268.00 -20.10	8708.00 38.93	10775.00 23.74	13335.00 23.76	11964.00 -10.28	11433.00 -4.44	11034.00 -3.49	11366.00 3.01	9807.00 -13.72	10130.00 3.29	7724.00 -23.75	-3887.00 -33.48
2016	6351.00 -17.78	6445.00 1.48	7066.00 9.64	7167.00 1.43	6890.00 -3.86	7314.00 6.15	8384.00 14.63	8105.00 -3.33	7497.00 -7.50	7455.00 -0.56	8007.00 7.40	7925.00 -1.02	201.00 2.60
2017	7492.00 -5.46	6502.00 -13.21	7537.00 15.92	6567.00 -12.87	4730.00 -27.97	5033.00 6.41	4897.00 -2.70	4940.00 0.88	4454.00 -9.84	4886.00 9.70	5447.00 11.48	5494.00 0.86	-2431.00 -30.68
2018	6040.00 9.94	5601.00 -7.27	5068.00 -9.52	4760.00 -6.08	4384.00 -7.90	4750.00 8.35	5175.00 8.95	5055.00 -2.32	4992.00 -1.25	6067.00 21.53	6468.00 6.61	6353.00 -1.78	859.00 15.64
2019	6605.00 3.97	6160.00 -6.74	6656.00 8.05	7184.00 7.93	7006.00 -2.48	6970.00 -0.51	6529.00 -6.33	5974.00 -8.50	5590.00 -6.43	6835.00 22.27	6695.00 -2.05	6860.00 2.46	507.00 7.98
2020	6498.00 -5.28	5922.00 -8.86	5820.00 -1.72	5798.00 -0.38	5620.00 -3.07	6280.00 11.74	6350.00 1.11	6974.00 9.83	6792.00 -2.61	6742.00 -0.74	6370.00 -5.52	5862.00 -7.97	-998.00 -14.55
2021	6188.00 5.56	7176.00 15.97	7104.00 -1.00	6746.00 -5.04									884.00 15.08
Average	-0.75	-0.24	4.68	0.78	-3.89	2.55	7.41	-1.52	-3.47	6.52	3.03	-2.13	Average

## KEDIA ADVISORY

**KEDIA STOCKS & COMMODITIES RESEARCH PVT LTD.**  
Mumbai. INDIA.

For more details, please contact:

Mobile: +91 9323406035 / 9320096333 / 9619551022

Email: [info@kediaadvisory.com](mailto:info@kediaadvisory.com)

URL: [www.kediaadvisory.com](http://www.kediaadvisory.com)

SEBI REGISTRATION NUMBER - INH000006156

General Disclaimers: This Report is prepared and distributed by Kedia Stocks & Commodities Research Pvt Ltd. for information purposes only. The recommendations, if any, made herein are expression of views and/or opinions and should not be deemed or construed to be neither advice for the purpose of purchase or sale through KSCRPL nor any solicitation or offering of any investment /trading opportunity. These information / opinions / views are not meant to serve as a professional investment guide for the readers. No action is solicited based upon the information provided herein. Recipients of this Report should rely on information/data arising out of their own investigations. Readers are advised to seek independent professional advice and arrive at an informed trading/investment decision before executing any trades or making any investments. This Report has been prepared on the basis of publicly available information, internally developed data and other sources believed by KSCRPL to be reliable. KSCRPL or its directors, employees, affiliates or representatives do not assume any responsibility for, or warrant the accuracy, completeness, adequacy and reliability of such information / opinions / views. While due care has been taken to ensure that the disclosures and opinions given are fair and reasonable, none of the directors, employees, affiliates or representatives of KSCRPL shall be liable for any direct, indirect, special, incidental, consequential, punitive or exemplary damages, including lost profits arising in any way whatsoever from the information / opinions / views contained in this Report. The possession, circulation and/or distribution of this Report may be restricted or regulated in certain jurisdictions by appropriate laws. No action has been or will be taken by KSCRPL in any jurisdiction (other than India), where any action for such purpose(s) is required. Accordingly, this Report shall not be possessed, circulated and/ or distributed in any such country or jurisdiction unless such action is in compliance with all applicable laws and regulations of such country or jurisdiction. KSCRPL requires such recipient to inform himself about and to observe any restrictions at his own expense, without any liability to KSCRPL. Any dispute arising out of this Report shall be subject to the exclusive jurisdiction of the Courts in India.